

How to Download and Install Sage 50 – U.S. Edition

Quick Reference Guide

Sage Advisor

Important Tips:

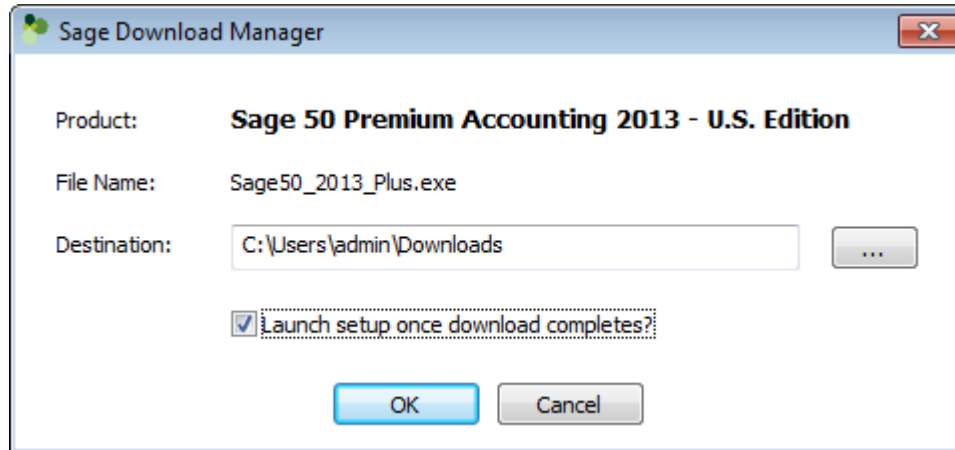
- If you are installing on a network, you need to download and install Sage 50 on the computer that will store your company data files (the server) and then on each workstation. For further instructions, see the section titled [“Installing on a Network”](#)
 - We recommend that you use Internet Explorer when downloading the product.
-

1) Download the Sage 50 installation file.

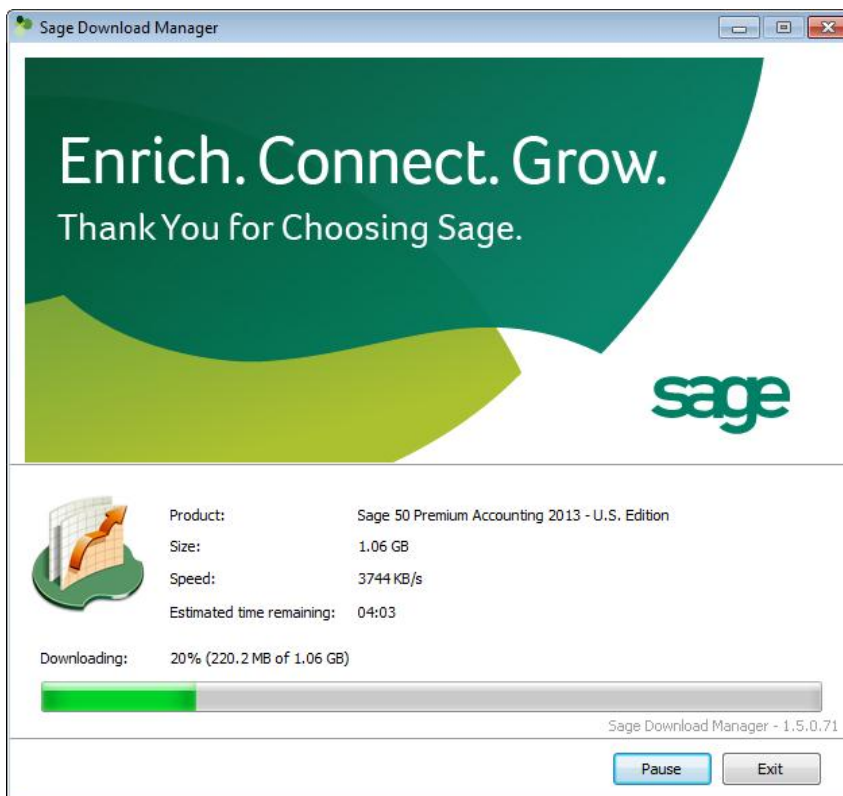
- Click **Download Now** on the product download page. You can find the link for your product download in the email you received when you ordered your product. The subject of the email is ‘Sage Download Notification for Order No.’
- Click Run to start the download process. If you are asked more than once to run the file, click Run each time.



- Next, you are prompted to save the download file. By default, the Sage 50 installation file (Sage50_2013.exe or Sage50_2013_Plus.exe) may be saved to your Downloads folder. To install the product after it downloads, we recommend to leave the option 'Launch setup once download completes' selected. Click OK to start the download.



- The Sage Download Manager downloads the product installation file. This process may take a while depending on your internet connection.
Note: The product is not installing at this point. After the file is downloaded, the Installation Wizard will automatically open to assist you with installing the product.



- If you did not choose to launch setup after the download, open Windows Explorer and do a search for Sage50_2013.exe or Sage50_2013_Plus.exe. The file should be located wherever you chose to download it (by default, the file may be located in your Downloads folder).

2) Install Sage 50

Once the download completes, you can click Install to start the installation.

Note: By default the installation file directory is located at C:\Sage\Sage50_2013_1 or C:\Sage\Sage50_2013_Plus. This directory contains the same contents that are found on the product installation disc. You can access this directory if you ever need to re-install the product.



Installing on a network

- If you are installing on a network, you need to install Sage 50 on the server first and then on each workstation.
- After you have installed on the server, we recommend that you follow the network installation instructions. Towards the end of the installation, you can click the option to ‘View important information you will need when installing Sage 50 on your network.’ The network installation instructions will also display in your web browser after you click Finish on the server installation. You can e-mail, save or print the network installation instructions so you have it available when installing on the workstations.

